



Omega Chemical Superfund Site

Legal & Claims Committee

Item 8-7

December 8, 2015

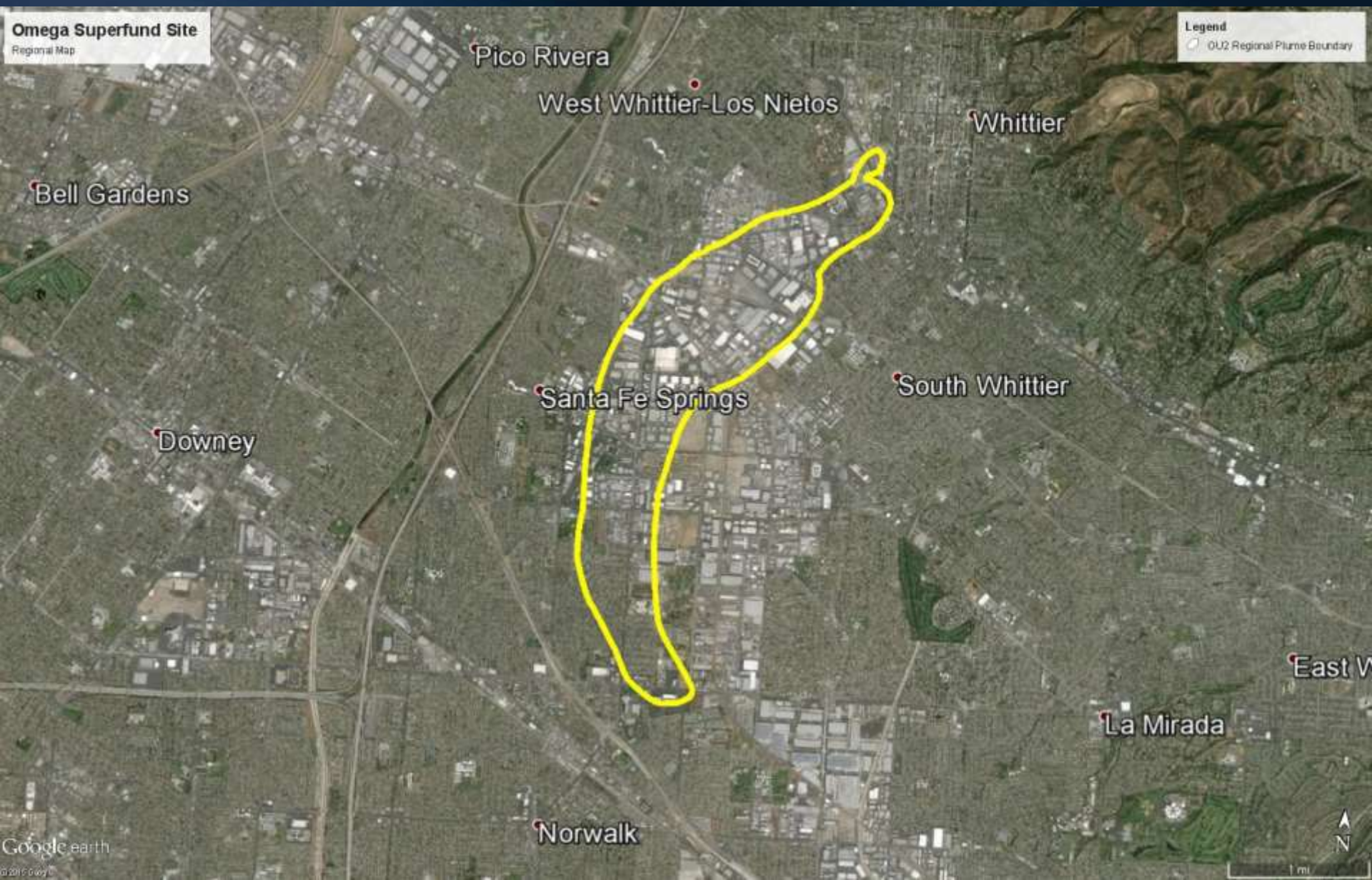
Omega Chemical Corporation

- Hazardous waste treatment, storage, and disposal facility based in Whittier
- In operation from 1976 to 1991
- Fully permitted by DTSC and EPA

Omega Chemical Corporation



Offsite groundwater plume



Regulatory Involvement - 1995

- CA Department of Toxic Substances Control (DTSC):
 - Cites Omega for failure to properly manage facility
 - Revokes permits
 - Suspends operations
 - Criminal charges brought against owner/operator
- EPA issues Unilateral Administrative Order:
 - 170 Potentially Responsible Parties (PRP) to clean up site

Metropolitan's Involvement

- 1989-1991 - Metropolitan sent hazardous waste to Omega site for recycling and disposal
- 1995 - Metropolitan joined the Omega PRP Organized Group (OPOG), currently comprised of 64 other members
- Since 1995 - Metropolitan and other PRPs participate in cleanup:
 - Removed hazardous waste drums
 - Completed site characterization
 - Prepared work plan

Omega Becomes a Superfund Site

- 1999 – Added to National Priority List as a Superfund Site
 - Under CERCLA, owner/operator and all waste generators are jointly and severally liable for cleanup
- 2001 – Partial Consent Decree entered
 - Onsite groundwater cleanup
- 2010-2012 – EPA develops further work plan for offsite groundwater cleanup
- OPOG continues cleanup

Settlement Discussions

- OPOG enters into confidentiality agreements with EPA and McKesson
- OPOG members bound by these agreements and confidentiality provision in PRP agreement
- Must remain confidential until EPA lodges a fully executed consent decree with the court: anticipated January 2016

Closed Session

- Discussion in closed session of confidential terms of proposed partial settlement

